

ValidDumps



Try Before You Buy

Download a free sample of any of our exam questions and answers

- ✓ 24/7 customer support, Secure shopping site
- ✓ Free One year updates to match real exam scenarios
- ✓ If you failed your exam after buying our products we will refund the full amount back to you.


Select a vendor... Select an exam...


Your email address [Free Download](#)



What Clients Say About Us

- “The exam is actually not scared. It is quite similar with the on-line test. I feel casual to pass it. The questions are not hard. - Edward
- “Do not treat yourself too hard. Only 2 days to pass the exam by this dumps. you have much time to relax. really good dumps. - Berger
- “I am happy to choose validdumps, it is very useful for my exam. It is worthy it. - Henry


HAPPY CUSTOMERS
51892


DOWNLOADS
68912


TEAM MEMBERS
56892


SHARES
75162

<http://www.validdumps.top>

The valid and reliable exam dumps are the guarantee for your success

Exam : **70-680**

Title : TS:Windows 7,Configuring

Vendor : Microsoft

Version : DEMO

NO.1 Which of the following best describes how the user is alerted with information system and configuration alerts?

- A. A popup occurs and the Windows 7 desktop contrast is dimmed. Until you acknowledge the alert the screen will not move.
- B. If Aero is installed the shaking alert flag appears in the index bar of every open window.
- C. A flag in the taskbar with a red "x" indicates there is a problem needing attention.
- D. All of the above

Answer: C

NO.2 Your company network includes portable computers that have Windows 7 Ultimate and Windows 7 Professional installed.

You want to standardize all portable computers to Windows 7 Professional for Key Manager Server (KMS) licensing purposes.

You need to install Windows 7 Professional on all Windows 7 Ultimate portable computers.

What should you do?

- A. Launch Windows Update
- B. Perform a clean installation over the existing system partitions.
- C. Perform a clean installation on non-system partitions.
- D. Supply the Windows 7 Professional KMS key.
- E. Launch Windows Anytime Upgrade.

Answer: B

Explanation:

Think that this is right don't think it can be done

NO.3 You have a computer that runs Windows 7.

You install Internet Information Services (IIS) to test a web based application. You create a local group named Group1. You need to ensure that only the members of Group1 can access the default Web site.

Which two configuration changes should you perform? (Each correct answer presents part of the solution, Choose two.)

- A. Modify the properties of Group1.
- B. Assign an SSL certificate to the default Web site.
- C. Modify the authentication methods of the default Web site.
- D. Modify the NTFS permissions of the %systemroot%\inetpub\wwwroot folder

Answer: C,D

Explanation:

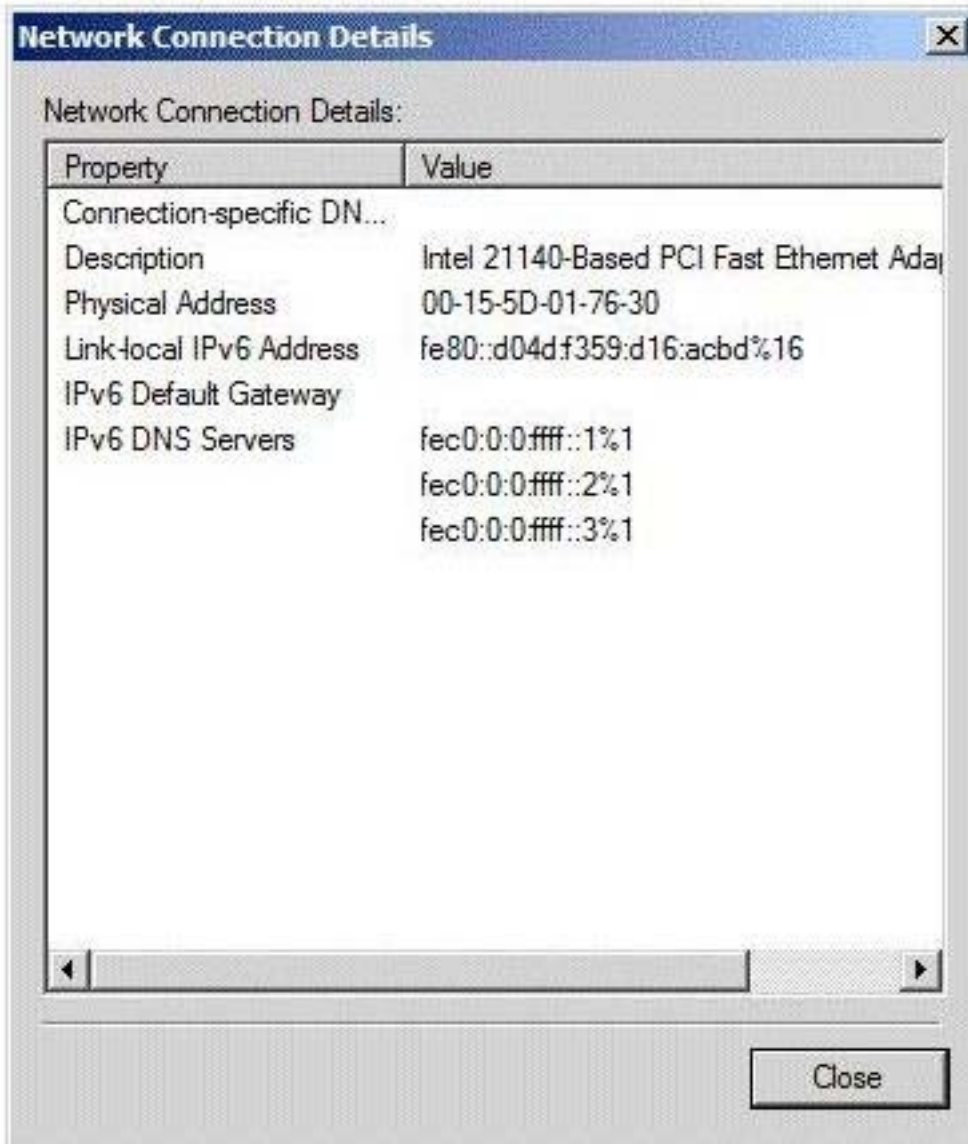
Modifying the Default Authentication Method

You can use the Directory Security tab of the Web Site Properties dialog box to change the authentication method. The authentication method determines whether users are identified, and how users must be identified to access your site. The authentication method you select varies, depending on the kind of site you are creating and the purpose of the site.

Modify the NTFS permissions of the %systemroot%\inetpub\wwwroot folder See article:

How to set required NTFS permissions and user rights for an IIS 5.0, IIS 5.1, or IIS 6.0 Web server <http://support.microsoft.com/kb/271071> Trust me ;)

NO.4 You have a computer that runs Windows 7. The network connection details are shown in the exhibit. (Click the Exhibit button.)



You need to manually assign an IP address of 192.168.1.50 to the computer.

What should you do first?

- A. Enable TCP/IPv4.
- B. Disable TCP/IPv6.
- C. Run Ipconfig and specify the /renew parameter.
- D. Run Netsh and specify the Interface ipv4 add address command.

Answer: A

Explanation:

IPv4 is not currently enabled and 192.168.1.50 is an IPv4 address. Therefore IPv4 is required so ENABLE it.

NO.5 A remote user has a computer that runs Windows 7. The user reports that he receives several error messages while using an application. You do not have remote access to the user's computer. You need to tell the user how to create screenshots of the actions he performs on the computer. The solution must track the mouse actions that the user performs. What should you instruct the user to do?

- A. Press ALT+PrintScreen
- B. Run Psr.exe and then click Start Record
- C. From Mouse Properties, select Display pointer trails
- D. Run Snippingtool.exe, click New, and then click Window Snip

Answer: B

Explanation:

How do I use Problem Steps Recorder? You can use Problem Steps Recorder to automatically capture the steps you take on a computer, including a text description of where you clicked and a picture of the screen during each click (called a screen shot). Once you capture these steps, you can save them to a file that can be used by a support professional or someone else helping you with a computer problem. Notes When you record steps on your computer, anything you type will not be recorded. If what you type is an important part of recreating the problem you're trying to solve, use the comment feature described below to highlight where the problem is occurring.

NO.6 Your laptop has a 400 GB drive and currently reserves, by default, 2% (8 GB) for shadow copies. You need to reserve more space for previous versions of files.

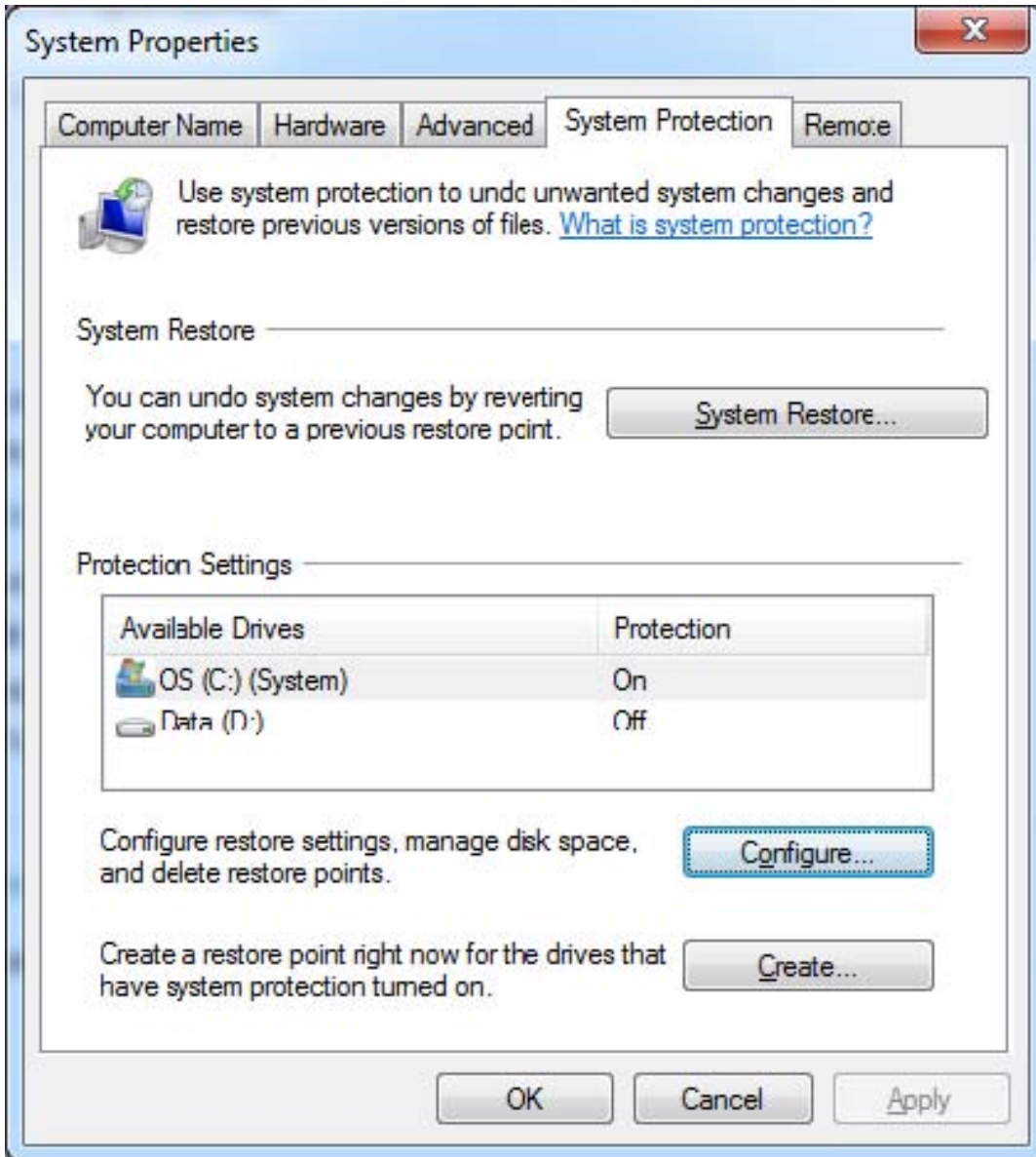
What should you do?

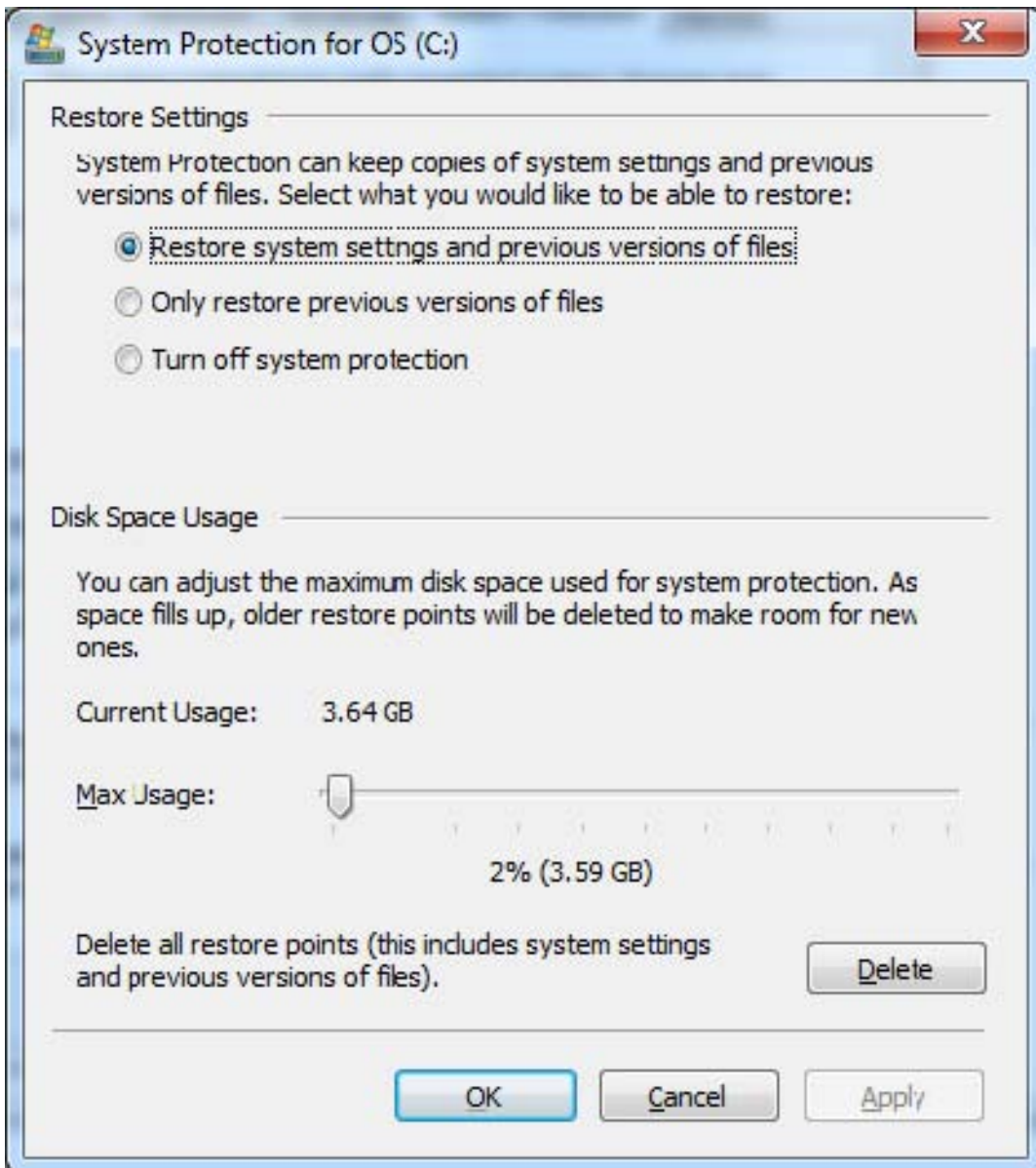
- A. From System Properties, System Protection, expand the Max Usage to 20 GB.
- B. From System Properties, System Protection, turn off system protection.
- C. From Disk Properties, change the Quota Settings from 8 GB to 20 GB.
- D. From an elevated command prompt, run vssadmin add shadowstorage /for=c: /on = c: /maxsize = 20gb.

Answer: A

Explanation:

Control Panel->System and Security. >System [Properties]->System Protection->Configure





NO.7 A company has Windows 7 Enterprise computers that use BitLocker drive encryption on operating system drives.

You need to configure multi-factor authentication before client computers are booted into Windows.

On each client computer, what should you do?

- A. Configure a TPM PIN.
- B. Implement fingerprint authentication.
- C. Implement a Dynamic Access Control policy.
- D. Install a standalone certification authority server.

Answer: A

Explanation:

BitLocker supports multifactor authentication for operating system drives.

If you enable BitLocker on a computer that has a TPM version 1.2, you can use additional forms of authentication with the TPM protection.

BitLocker offers the option to lock the normal boot process until the user supplies a personal

identification number (PIN) or inserts a USB device (such as a flash drive) that contains a BitLocker startup key, or both the PIN and the USB device can be required.

These additional security measures provide multifactor authentication and help ensure that the computer will not start or resume from hibernation until the correct authentication method is presented.

NO.8 A computer that runs Windows XP has on basic disk containing a single partition. The partition has 30 GB of free space. The hard disk has 5 GB of unallocated space.

You need to install Windows 7 in a dual-boot configuration. Windows 7 must not be installed in a virtual hard disk (VHD).

What should you do first?

- A. Create a second partition.
- B. Shrink the primary partition.
- C. Convert the hard disk to a GPT disk.
- D. Convert the hard disk to a dynamic disk.

Answer: B

Explanation:

Given the system requirements more space is required. There is not enough unallocated space so the XP partition will need to be shrunk first, in order for a sufficient sized partition to be created.

Requirements: Windows 7 Home Premium, Professional, Ultimate, and Enterprise editions have the following minimum hardware requirements: - 1 GHz 32-bit (x86) or 64-bit (x64) processor - 1 GB of system memory - A 40-GB hard disk drive (traditional or SSD) with at least 15 GB of available space - A graphics adapter that supports DirectX 9 graphics, has a Windows Display Driver Model (WDDM) driver, Pixel Shader 2.0 hardware, and 32 bits per pixel and a minimum of 128 MB graphics memory

NO.9 Your company network includes a Windows Server 2008 R2 server named Server1 and client computers that have Windows 7 installed. All computers are members of an Active Directory domain. You use a computer named Client1.

You plan to collect events from Client1 on Server1 by using HTTPS. On Server 1, you start and configure the Windows Event Collector service. On Client1, you start the Windows Remote Management service.

You discover that no events are being collected.

You need to ensure that events are forwarded from Client1 to Server1.

What should you do?

- A. On Client1, create an outbound Rule to allow port 443 for the Domain connection type.
- B. On Server1, create a Windows Event Collector firewall exception for the Domain connection type.
- C. On Client1, create an inbound Rule to allow port 5986 for the Domain connection type.
- D. On Client1, create a Windows Remote Management firewall exception for the Public connection type.

Answer: C

NO.10 A user named User1 uses a shared computer that runs Windows 7.

User1 is a standard user. User1 attempts to connect a USB device to the computer and is prompted to enter administrative credentials.

You need to ensure that User1 can use the USB device without requiring administrative credentials. What should you do first?

- A. Add User1 to the Power Users group.
- B. Run Pnputil.exe and specify the -i -a parameters.
- C. Run Driverquery.exe and specify the /SI parameter.
- D. Copy the driver files to the C:\windows\system32 folder.

Answer: B

Explanation:

When a driver is staged, it is placed in the device driver store and non-administrators can install the device, provided they have permission to install devices in the appropriate device setup class.

Pnputil.exe is a command line utility that you can use to manage the driver store. You can use Pnputil to add driver packages, remove driver packages, and list driver packages that are in the store. -i Specifies to install the identified INF file. Cannot be used in conjunction with the -f parameter.

Example pnputil.exe -i -a a:\usbcam\USBCAM.INF Adds and installs the specified driver

NO.11 You administer client computers that have Windows 7 Enterprise installed.

A server names Server1 has an IP address of 10.10.4.46. The server accepts Remote Desktop connections at a custom port 10876.

You need to connect to the server from a client computer by using Remote Desktop.

What should you do?

- A. From an elevated command prompt, run mstsc.exe /v:server1:10876
- B. From an elevated command prompt, run msts.exe 10.10.4.56 port:10876
- C. From an elevated command prompt, run msts.exe Server1 port:10876
- D. From the Advanced tab of your remote Desktop connection, configure the IP address and port of Server1 as the RD Gateway Server

Answer: A

Explanation:

<http://windows.microsoft.com/en-us/windows-vista/Use-command-line-parameters-with-Remote-Desktop-Connection>

Use command line parameters with Remote Desktop Connection

Instead of starting Remote Desktop Connection from the Start menu, you can start it from the search box in this version of Windows, from the Run dialog box, or from a command line. With these methods, you can use additional command line parameters to control how Remote Desktop Connection looks or behaves.

To start Remote Desktop from the Run dialog box, follow these steps:

Click the Start button , click All Programs, click Accessories, and then click Run.

In the Open box, type mstsc.

Type a space, followed by any additional parameters that you want to use.

The following table lists the parameters you can use.

Command line syntax for Remote Desktop Connection Syntax

mstsc [<connection file>] [/v:<server[:port]>] [/admin] [/f[ulldesktop]] [/w:<width>] [/h:<height>] [/public] | [/span] [/edit "connection file"] [/migrate] [/?]

Command line parameters for Remote Desktop Connection ParameterDescription

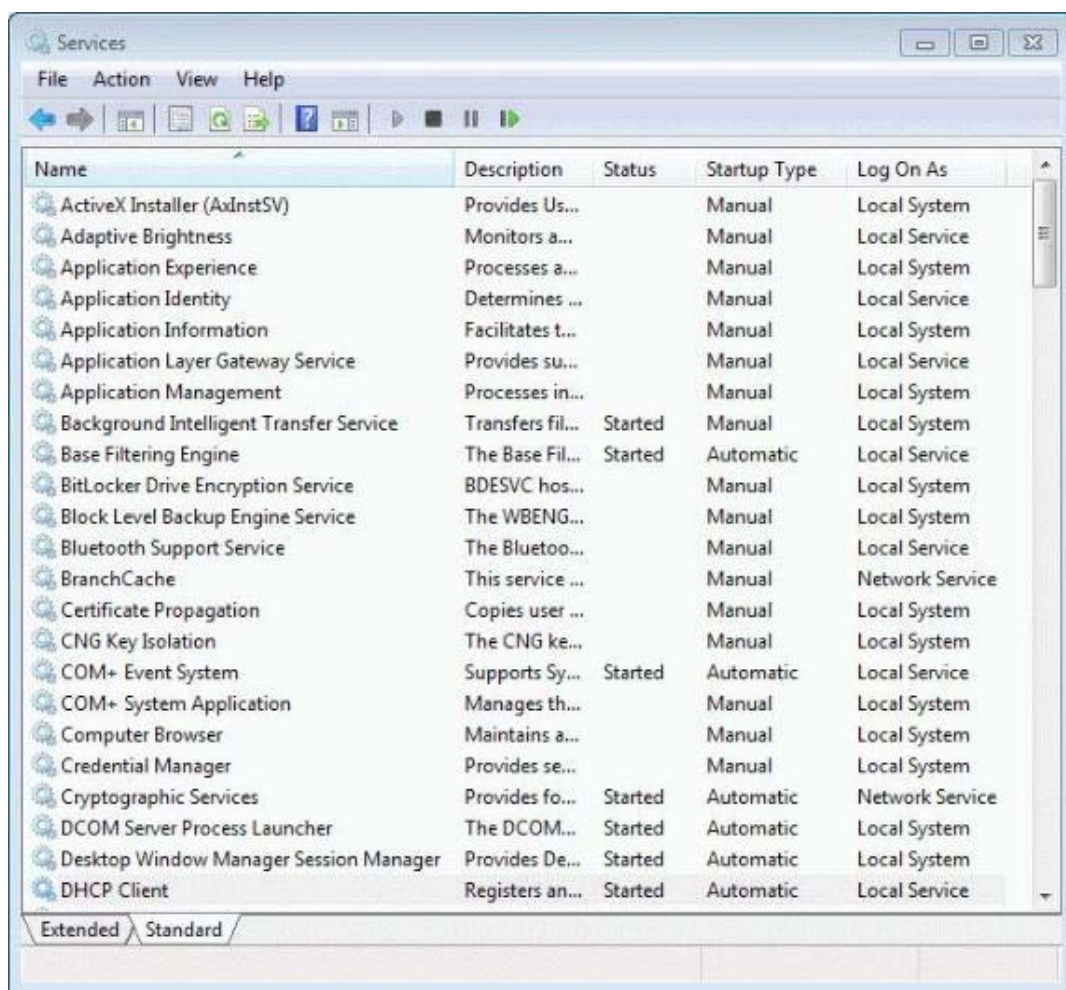
/v:<server[:port]>	Specifies the remote computer you want to connect to.
/admin	Is used for administration of a terminal server. In this version of Remote Desktop Connection, if the Terminal Server role service is installed on the remote computer, running mstsc /admin will do the following (for the current connection only): Disable Terminal Services client access licensing. Disable time zone redirection. Disable TS Session Broker redirection. Disable TS EasyPrint. /admin also does the following on connections to Windows Server 2008 with the Terminal Server role service installed: Disables Plug and Play device redirection for this connection only. Changes the remote session theme to Windows Classic View for this connection only. To connect to a remote computer with the Terminal Server role service installed, follow these steps: Open the Command Prompt window by clicking the Start button, clicking All Programs, clicking Accessories, and then clicking Command Prompt. Type mstsc /v:server /admin.
/f	Starts Remote Desktop Connection in full-screen mode.
/w:<width>	Specifies the width of the Remote Desktop Connection window.
/h:<height>	Specifies the height of the Remote Desktop window.
/public	Runs Remote Desktop Connection in public mode. Matches the remote desktop width and height with the local virtual desktop, spanning across multiple monitors if necessary. To span across monitors, the monitors must all have the same height and be aligned side by side.
/span	
/edit "connection file"	Opens the specified .rdp connection file for editing.
/migrate	Migrates older connection files that were created with Client Connection Manager to new .rdp connection files.
/?	Lists these parameters.

NO.12 You have a computer that runs Windows 7.

You have an application control policy on the computer.

You discover that the policy is not enforced on the computer.

You open the Services snap-in as shown in the exhibit. (Click the Exhibit button.)



You need to enforce the application control policy on the computer.

What should you do?

- A. Set the Application Identity service Startup Type to Automatic and start the service.
- B. Set the Application Information service Startup Type to Automatic and start the service.
- C. Set the Application Management service Startup Type to Automatic and start the service.
- D. Set the Application Experience service Startup Type to Automatic and start the service.

Answer: A

Explanation:

Application Identity service AppLocker relies upon the Application Identity Service being active.

When you install Windows 7, the startup type of this service is set to Manual.

When testing AppLocker, you should keep the startup type as Manual in case you configure rules incorrectly.

In that event, you can just reboot the computer and the AppLocker rules will no longer be in effect.

Only when you are sure that your policies are applied correctly should you set the startup type of the Application Identity Service to Automatic.

You should take great care in testing AppLocker rules because it is possible to lock down a computer running Windows 7 to such an extent that the computer becomes unusable.

AppLocker policies are sometimes called application control policies

NO.13 You need to ensure that when you insert a blank DVD into the DVD drive, Windows Explorer

opens automatically and enables you to select files to burn to DVD.

What should you do?

- A. From Default Programs, modify the AutoPlay settings.
- B. From Default Programs, modify the default program settings.
- C. From Device Manager, modify the properties of the DVD drive.
- D. From System Configuration Utility, modify the Startup settings.

Answer: A

NO.14 You have a computer that runs Windows 7. The computer is a member of a workgroup.

You use Encrypting File System (EFS) to protect your local files.

You need to ensure that you can decrypt EFS files on the computer if you forget your password.

What should you do?

- A. From Authorization Manager, modify the Authorization Manager options.
- B. Run the cipher.exe /adduser /user:administrator command.
- C. From User Accounts, select Manage your file encryption certificates.
- D. From Credential Manager, select Back up vault.

Answer: C

Explanation:

Make sure you have a backup of the appropriate encryption certificates

NO.15 You plan to deploy Windows 7 images.

You need to ensure that you can deploy images using the WindowsPreinstallation Environment (Windows PE).

What would you add to the Windows PE Image?

- A. ImageX
- B. Usmtutils.exe
- C. Mighost.exe
- D. Loadstate.exe

Answer: A

NO.16 Which of the following can be used to increase the physical memory on your Windows 7 PC and increase the speed?

- A. PhysiRAM
- B. Aero Glass
- C. DirectAccess
- D. ReadyBoost

Answer: D

NO.17 DRAG DROP

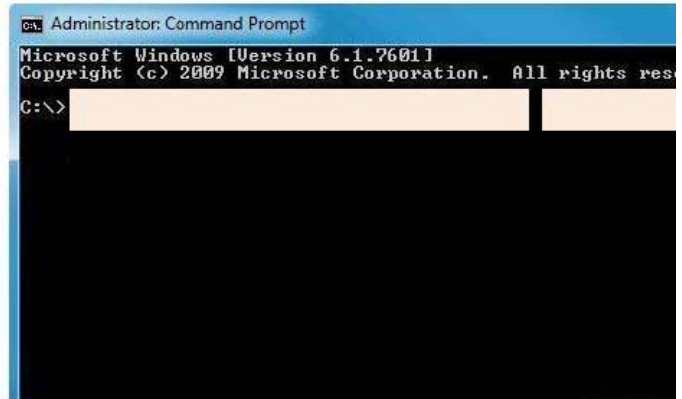
You have a computer that runs Windows XP. The computer has one partition. You install Windows 7 on the computer.

You need to migrate a user profile from the Windows XP installation to Windows 7 installation.

What should you do first? (To answer, drag the appropriate command from the list of command to

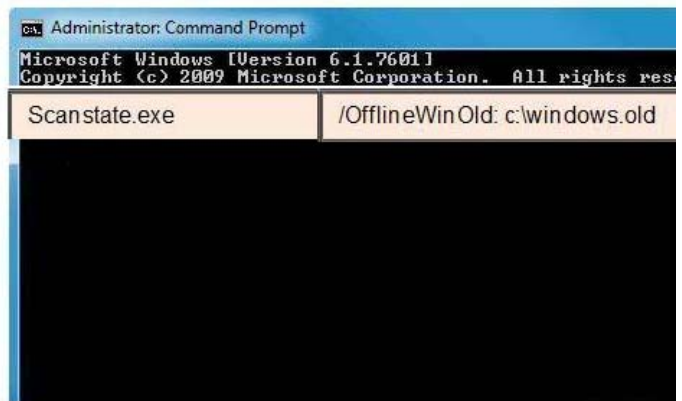
the correct location or locations in the work area.)

Xcopy /s /e
"c:\windows.old\documents and settings*. *" c:\users\
Scanstate.exe
"c:\windows\users*. *" c:\users\
/OfflineWinOld: c:\windows
/OfflineWinOld: c:\windows.old



Answer:

Xcopy /s /e
"c:\windows.old\documents and settings*. *" c:\users\
Scanstate.exe
"c:\windows\users*. *" c:\users\
/OfflineWinOld: c:\windows
/OfflineWinOld: c:\windows.old



NO.18 You manage a network device by using a web interface.

You perform all critical Windows updates so that the computer now runs Internet Explorer

10. After performing these updates, the layout of the network device web page displays incorrectly.

Other web pages display correctly.

You need to resolve this issue.

What should you do?

- A. Clear Internet Explorer's browsing history.
- B. Enable Compatibly Mode for the network device web page.
- C. Set the local Intranet security zone to Low.
- D. Add the network device web page to the trusted sites zone.

Answer: D