

# ValidDumps



### Try Before You Buy

Download a free sample of any of our exam questions and answers

- ✓ 24/7 customer support, Secure shopping site
- ✓ Free One year updates to match real exam scenarios
- ✓ If you failed your exam after buying our products we will refund the full amount back to you.

Select a vendor...  Select an exam...


Your email address  [Free Download](#)



### What Clients Say About Us

- “The exam is actually not scared. It is quite similar with the on-line test. I feel casual to pass it. The questions are not hard. - Edward
- “Do not treat yourself too hard. Only 2 days to pass the exam by this dumps. you have much time to relax. really good dumps. - Berger
- “I am happy to choose validdumps, it is very useful for my exam. It is worthy it. - Henry

  
HAPPY CUSTOMERS  
51892

  
DOWNLOADS  
68912

  
TEAM MEMBERS  
56892

  
SHARES  
75162

<http://www.validdumps.top>

The valid and reliable exam dumps are the guarantee for your success

**Exam :** 250-401

**Title :** Administration of Symantec  
Management Platform 7.0 with  
Notification Server

**Vendors :** Symantec

**Version :** DEMO

1.The IT staff for a large corporation is distributed among its many physical sites. The Symantec Management Platform administrator needs to ensure that the local IT staff for any given location only has rights to manage computers at that location and not at any other location.

Which two items must the administrator create and assign the appropriate rights to? (Select two.)

- A. filter
- B. organizational group
- C. site
- D. organizational view
- E. collection

**Answer:** B,D

2.The IT Department has been experiencing frequent turnover requiring administrators to modify security role membership on an individual user basis An administrator wants to take advantage of membership assignments established when new users are created in the network environment and connect them to security roles. Which resource can be used in the Membership tab to allow user assignments to be managed independently of the Security Role Manager?

- A. Active Directory Security groups
- B. Active Directory organizational units
- C. Altiris Security Users
- D. Altiris Security Groups

**Answer:** A

3.During installation of the Symantec Management Platform 7.0 (SMP), an administrator specifies an account created for SMP to be used as the Application Identity. When the administrator tries to connect to the console from their workstation they receive an Access Denied message.

Why is the administrator's access denied?

- A. The account used to install is the only account in the Symantec Administrators Group.
- B. The account used during installation has NOT been added to the Domain Administrators Group.

C. The system administrator is using an account that is not a member of the Domain Administrators Group.

D. The console must be run from a terminal services session of the Notification Server.

**Answer: A**

4.How is resource scoping implemented?

A. by including appropriate filters and organizational views and groups in a target's rules

B. by replacing filters and organizational views and groups in a target with appropriate secured data classes  
C. by creating multiple organizational views and groups that contain appropriate subset of resources

D. by granting permissions to appropriate organizational views and groups to a security role

**Answer: D**

5.Which permissions do new security roles have?

A. the same permissions as the Symantec Administrators role

B. the same permissions as the Symantec Guests role

C. the same permissions as the Symantec Supervisors role

D. none

**Answer: D**

6.An Administrator wants to customize the default Symantec Administrators security role for use as a new template for future console administrators Upon selection, the options are grayed out and inaccessible. Which action should the administrator take to modify these privileges?

A. break inheritance to parent roles

B. take ownership of the role

C. clone the role and modify the copy

D. use a different credential with more permissions

**Answer: C**

7. Two administrators run the same report that displays Windows XP SP1 workstations imported from Active Directory. The North America Symantec Administrator returns 2,500 workstations. The Marketing Manager returns 500 workstations. When they compare the results, they find that there is an overlap of 100 workstations.

Why is there an overlap in the reports?

- A. because the workstations belong to multiple organizational groups in same organizational view.
- B. because the workstations belong to organizational groups in separate organizational views
- C. because of workstation security privilege intersection
- D. because of workstation security role filters

**Answer: B**

8. What are two ways that permissions are set within the Security Role Manager? (Select two.)

- A. security role membership
- B. NT rights assignment
- C. inheritance
- D. explicitly granted
- E. domain membership

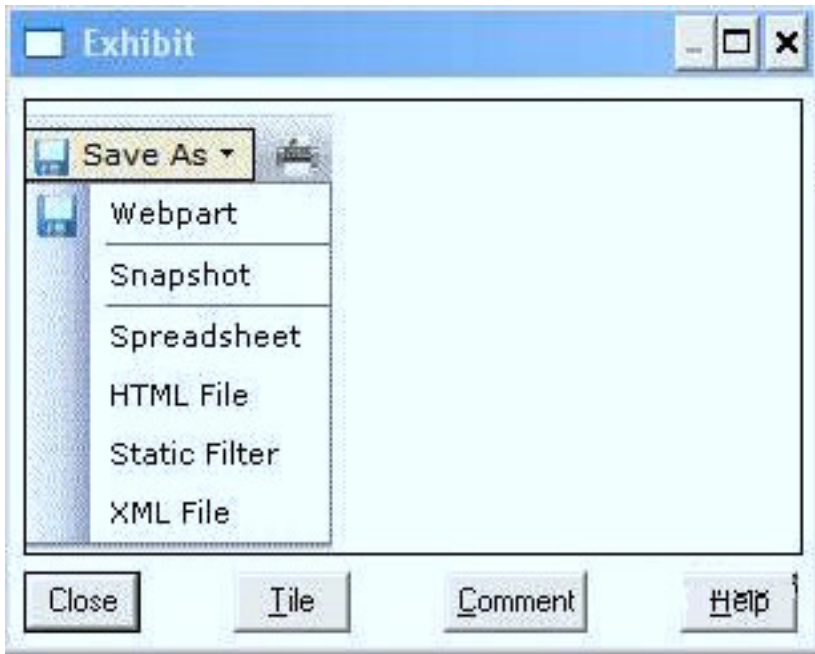
**Answer: C,D**

9. Which two tabs are used to modify security roles in the Symantec Management Console? (Select two.)

- A. Permissions
- B. Privileges
- C. Rights
- D. Security
- E. Membership

**Answer: B,E**

10. Refer to the Exhibit.



The administrator created a report that returns the status of computers.

Which menu item should the administrator choose to compare the status from month to month?

- A. Snapshot
- B. Web Part
- C. Static Filter
- D. XML File

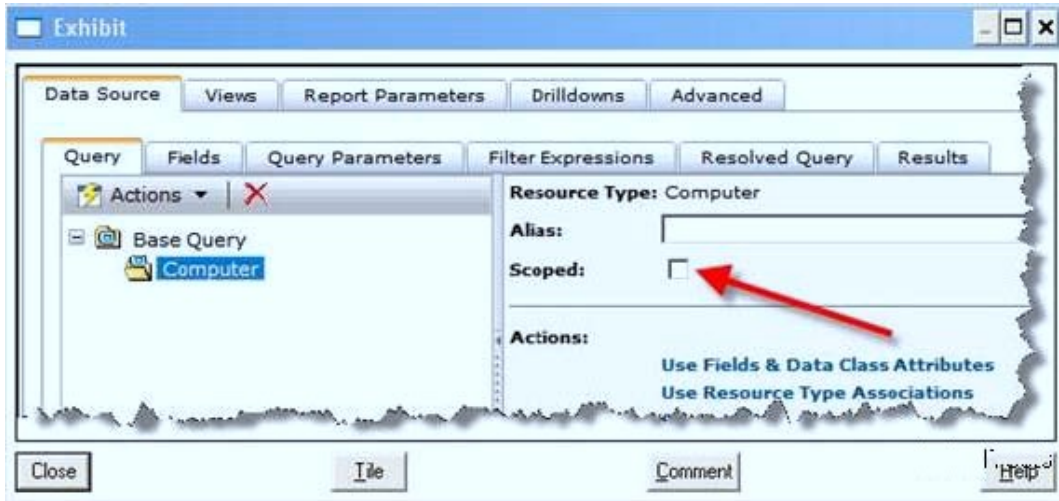
**Answer: A**

11. A manager is attempting to run a report that identifies users who have Microsoft Office and Adobe software installed, but the report fails to run. What is the first thing the administrator should do?

- A. check the report for errors
- B. check the manager's permissions
- C. remove security from the report
- D. clone and modify the report

**Answer: B**

12. Refer to the Exhibit.

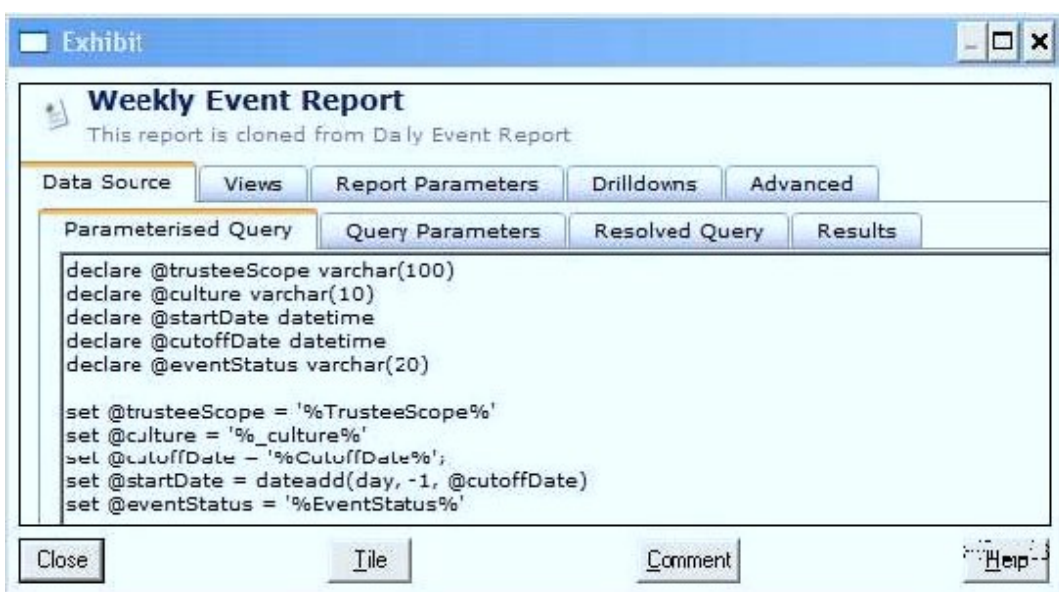


What is the effect of setting the scoped option when building a report query?

- A. The report results will be limited to the resources that the user has permissions to view.
- B. The users will be unable to bring up the Resource Manager by right-clicking on a row in the report results
- C. The available data classes will be limited to those that the user has permissions to view.
- D. The users will be unable to drill-down to lower levels when viewing the report results.

**Answer: A**

13.Refer to the Exhibit.



An administrator has cloned the Daily Event report. What must the administrator change to create a Weekly Event report?

- A. edit the Query Parameters to show a week of data
- B. edit the `dateadd(day, -1 @cutoffdate)` section
- C. edit the Resolved Query to show a week of data
- D. edit the views on the Views tab

**Answer: B**

14. Why would an administrator want to save a report as a web part?

- A. to save the results for later reference
- B. to use in a resource target
- C. to use in a portal page
- D. to be able to e-mail the results

**Answer: C**

15. What is the first point of contact for the Altiris Agent?

- A. Notification Server
- B. Symantec Management Console
- C. Package Service
- D. Task Service

**Answer: A**

16. How does the Symantec Management Console help keep reports secure and scoped?

- A. by enforcing permissions that determine which reports users can view
- B. by scoping privileges that determine which reports users can view
- C. by using report filters so that only specific report data is displayed
- D. by prompting Altiris Agents for log in credentials before viewing reports

**Answer: A**

17. Which statement describes the relationship between Site Server and Notification Server?

- A. Site Server assists Notification Server by providing packages and tasks to the Altiris Agent.
- B. Site Server sends information, events, and data from the Inventory Rule Agent to Notification Server
- C. Site Server assists Notification Server by running reports.
- D. Site Server takes over all functions for Notification Server.

**Answer: A**

18. Which component contains the core service of the Symantec Management Platform?

- A. Configuration Management Database (CMDB)
- B. Altiris Agent
- C. Site Service
- D. Notification Server

**Answer: D**

19. Which component enables users to view data from the Configuration Management Database (CMDB)?

- A. Log Viewer
- B. Reports
- C. Notification Server
- D. Software Management Framework

**Answer: B**

20. Which Symantec Management Platform component processes data sent by the Altiris Agent and stores it in the Configuration Management Database?

- A. Symantec Management Console
- B. Software Management Framework
- C. Notification Server

D. Site Services

**Answer: C**